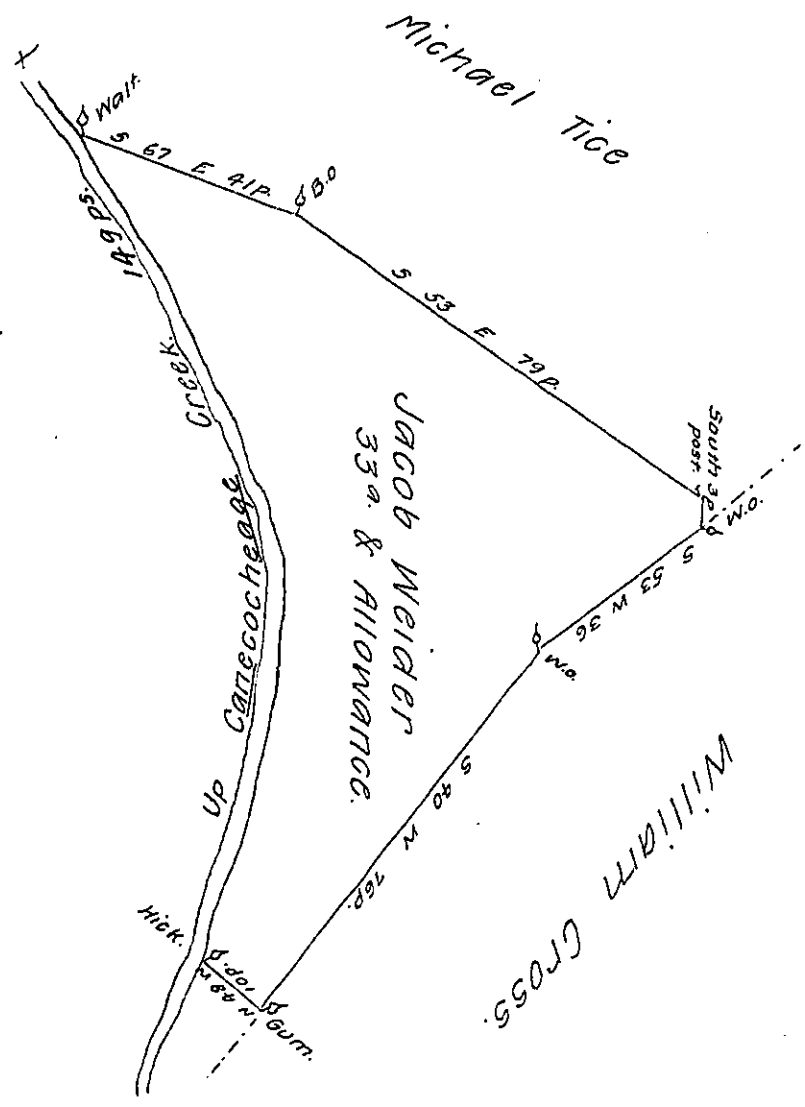


Courses on the Creek.  
 N 12 1/2 E 76  
 N 26 W 73  
 149 ps.



A Draft of a tract of land situate in Antrim township in the County of Franklin Containing thirty three acres and an allowance proportional to six P Cent for roads &c. Surveyed March 10<sup>th</sup> 1791 in pursuance of a Warrant granted to Jacob Weider bearing date the 24<sup>th</sup> Day of August 1790.

Matt<sup>w</sup> Henderson D.S.

To Daniel Brodhead Esq<sup>r</sup>  
 Surveyor General.

IN TESTIMONY that the above is a copy of the original remaining on file in the Department of Internal Affairs of Pennsylvania, made conformably to an Act of Assembly approved the 16th day of February 1833, I have hereunto set my hand and caused the Seal of said Department to be affixed at Harrisburg, this eighteenth day of June 1907.

*Henry Houck,*  
 Secretary of Internal Affairs.